

E Battery Bus Bar 150A

User Manual



Model: BB-4W-150A

2024.05 Version 1.1

Copyright ©2023 epropulsion All Rights Reserved

Introduction:

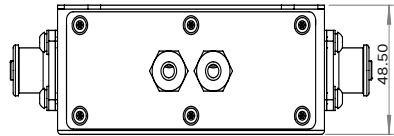
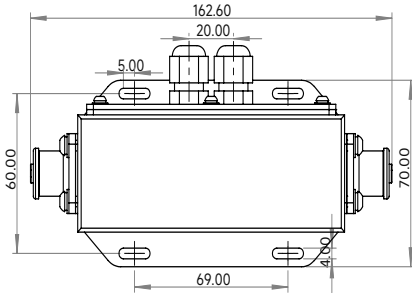
Thank you for purchasing ePropulsion E Battery Bus Bar 150A. This Bus Bar is specially designed for E60/E163 Battery.

Specifications:

 Each set of E Battery Bus Bar 150A includes 1pcs for positive, and 1pcs for negative.

Maximum Current	150A
Inside cable connection	M5x16mm,2pcs
Outside cable connection	E Battery Power Cable Connector,2pcs Allowable cable range 3-6mm waterproof connector,2pcs

Dimensions:



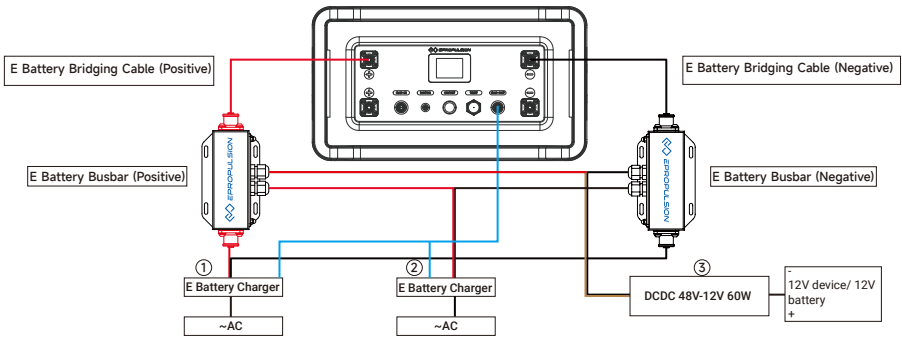
In the Box:

Item	Qty.	Note
E Battery Bus Bar Positive	1 set	/
E Battery Bus Bar Negative	1 set	/
Hexagon Socket 3-in-1 Combination Screws M3x10	6 pcs	/
Tapping Screw M3x10	8 pcs	/
Ring Terminals RNB5-6-90D	6 pcs	Wire Range:12-10 A.W.G(4-6mm ²)
Ring Terminals RNBL1-6-90D	6 pcs	Wire Range:12-10A.W.G(0.5-1.5mm ²)
E Battery Bus Bar 150a User Manual	1 pcs	/
Allen key	1 pcs	2.5mm

Notes:

- ▲ When using the bus bar, the Operation current should not exceed 150A.
- ▲ E Battery Bus Bar Positive is only intended for connecting to the positive terminal, and E Battery Bus Bar Negative is only intended for connecting to the negative terminal. Wrong connection may cause a short circuit.
- Before connecting the E Battery Bus Bar 150A with the third party product, please contact ePropulsion authorized distributor.
- Ensure electrical connections are correctly tightened !
- The installation requires the following tools: Phillips screwdriver , 1-5mm² wire crimping plier, electrical tape, Allen key.

Connection Method:



SN.	Method	Operation
①	Connect the E Battery Power Cable Connector	Connect the integrated DC output cable to the aviation socket of the bus bar.
②	Connect the E Battery Charger using waterproof connectors	Connect the DC output cable of Charger using waterproof connectors
③	Connect the DCDC 48v-12v 60w using waterproof connectors	Connect the DC output of DCDC using waterproof connectors

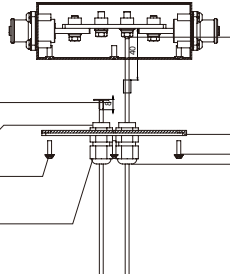
Installation Instructions:

4.Strip 5-8mm of the wire insulation and crimp the terminals using a crimping plier.
Connect to the DCDC using RNBL1-6-90D.
Connect to the E battery charger using RNB5-6-90D.

3. Pass the wires through a waterproof connector.

2.Use the allen key to loosen the screw cap and open the side panel.

1. Loosen the nut of the connector and remove the plug.

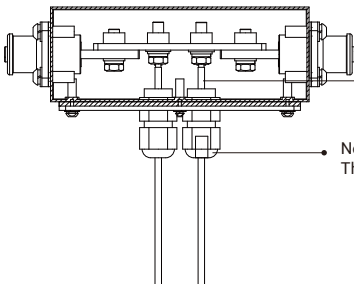


5.Install the terminals using screws with a torque of 3N·m.

6.Reinstall the side panels and straighten out the wires.

7.Use the allen key to install the nut.
Suggested torque 0.3 N · m

8.Tighten the nut of the waterproof connector.



Note:
Do not bend the wires inside the box.

Note:
The rubber of the waterproof joint should be closely matched with the cable.

Warranty:

ePropulsion E Battery Bus Bar 150A is guaranteed against any manufacturing defects for TWO years from date of delivery of products to end customers.

Free warranty is only validated upon the presentation of legal serial number, Warranty Card, and evidence of purchase from an authorized ePropulsion dealer.

Conditions:

Valid date of purchase should be established by the first-hand purchaser with original sales slip.

Free warranty is not transferable and will not be reissued.

The warranty is valid only when the information is correct and complete.

Warranty does not cover:

Minor faults producing no influence on the intended function of the product.

Faults resulting from any improper operation that contradicts the user manual.

Accessories supplied with the product.

Damage caused by accident, misuse or unauthorized repair.

Damage caused by dropping, improper care or storage.

If warranty expires, users can still enjoy maintenance services from ePropulsion authorized dealers with minimum maintenance charge.